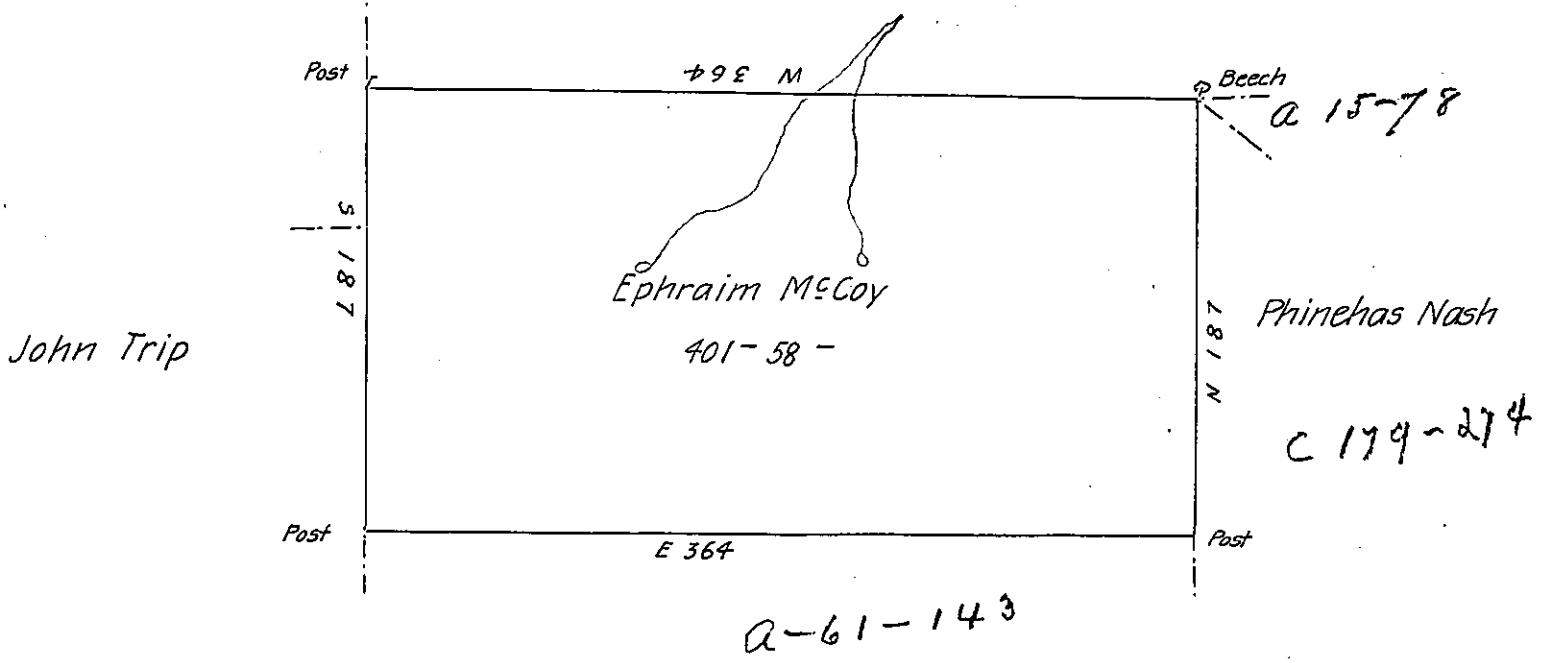


Marg<sup>t</sup> Campbell



Sam<sup>l</sup> Allen

By Virtue of a Warr<sup>t</sup> dated 28<sup>th</sup> Aug<sup>t</sup> 1792 Surveyed the 10<sup>th</sup> day of November 1793 Unto Ephraim McCoy the above described Tract of Four hundred and one acres and 58 perches of Land and Allowance Situated on a North branch of Bowmans Creek in Luzerne County

By

W<sup>m</sup> Montgomery D.S<sup>t</sup>

To Daniel Brodhead Esq<sup>r</sup>

Surv<sup>r</sup> Gen<sup>l</sup> of Pensylva<sup>a</sup>

N. 18.

IN TESTIMONY that the above is a copy of the original remaining on file in the Department of Internal Affairs of Pennsylvania, made conformably to an Act of Assembly approved the 16th day of February, 1833, I have hereunto set my Hand and caused the Seal of said Department to be affixed at Harrisburg, this fifth day of December 1905

*Geo A. Brown*  
 Secretary of Internal Affairs.